

**CODE NUMBER**

3366114

**DESCRIPTION**

Sloan® XLERATOR® Sensor-Operated Wall - Surface Hand Dryer EHD-502-ECO , 208/277V, Sloan® XLERATOR® Sensor-Operated Wall - Surface Hand Dryer.

**DETAILS**

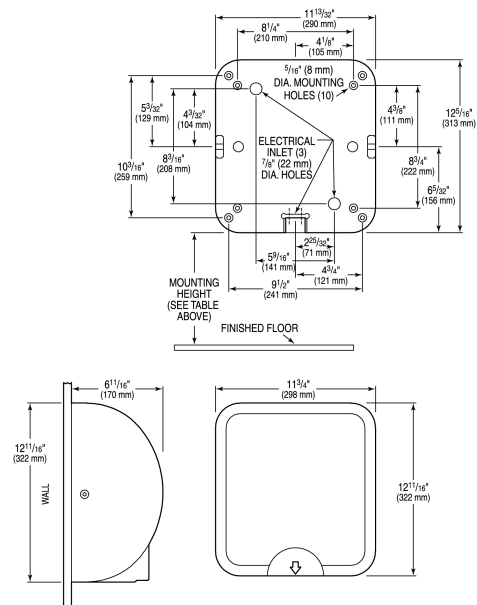
- Finish: Graphite (GR)
- Voltage: 208/277V
- Wattage: 50/60Hz
- Amperage: 2.0-2.2
- Mounting: Wall - Surface
- Power Type: Hardwired
- Depth: 12 86/125" (322mm)
- Height: 6 86/125" (170mm)
- Width: 11 3/4" (298mm)

**FEATURES**

- Automatically operates by means of an Infrared Optical Sensor with 35-second lockout feature, it activates a strong controlled air blast
- Residual moisture is evaporated with a warm stream of air up to 135°F/57°C
- One-piece heavy-duty rib reinforced die cast zinc alloy housing minimizes damage to dryer in abusive environments
- 95% cost savings vs. paper towels
- Can be easily positioned to comply with ADA requirements or for juvenile height
- Can install multiple units on one circuit
- Available in Polished White, Matte White, Polished Chrome, Brushed Nickel and Graphite
- Hygienic hand dryer solution
- 10 second dry time
- Virtually maintenance free
- Available with HEPA Filtration System proven to remove 99.97% of potentially present bacteria at 0.3 microns from the air

**DOWNLOADS**

- [Sloan XLERATOR and Sloan XLERATOR Eco Hand Dryer Instructions](#)
- [Additional Downloads](#)



**COMPLIANCES & CERTIFICATIONS**



(BAA Compliant, cUL Certified, EPD, Proposition 65, UL Certified)

**RECOMMENDED SPECIFICATION**

Sloan Xlerator Sensor Operated Hand Dryer. 208V/230V Graphite Finish.

**NOTES**

All information contained within this document subject to change without notice.

**Sloan 10500 Seymour Ave, Franklin Park, IL 60131**

Phone: 800.982.5839 • Fax: 800.447.8329 • [sloan.com](http://sloan.com)