

DESCRIPTION

SloanStone® 2-Station Wall-Mounted Washstation Sink.

DETAILS

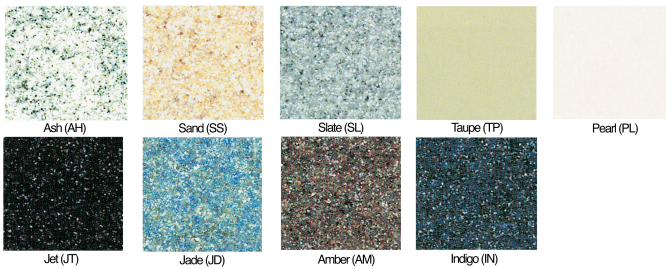
- Material: SloanStone
- Enclosure Type: Stainless Solid
- Width: 54 ¾" (1,391mm)

FEATURES

Double Station Lavatory System with Sloan Electronic Sensor Technology with the following features:

- Lavatory constructed of Non-porous SloanStone Solid Surface Material
- Lavatory supported by a heavy duty, 14 gauge, Type 304 stainless steel, brushed stainless Pedestal with 14 gauge galvanized steel Mounting Plate
- Single continuous basin with user Comfort Curve Design
- Front access panels for easy maintenance access
- Integral Dual Drainage System
- Sloan Optima Electronic Sensor Technology for hands free operation
- Lavatory System is shipped pre-plumbed with Sloan Electronic Controls for easy installation

COLORS



COMPLIANCES & CERTIFICATIONS



(ADA Compliant, cUPC Certified, BAA Compliant, IGC156)

RECOMMENDED SPECIFICATION

SloanStone Series Sink model no. EW 4X000 Washstation Style Sink. Product to be molded using SloanStone solid surface. Sloan integrated automated sensor faucets. Sink design to be ADA compliant and IAPMO certified. Supplied with enclosure.

DOWNLOADS

- [EW 40000 Installation Instructions](#)
- [EW 60000 Installation Instructions](#)
- [EW 70000 Installation Instructions](#)
- [EW 70000 \(Spanish\) Installation Instructions](#)
- [EW-42000/43000 Series Repair and Maintenance Guide](#)
- [Additional Downloads](#)

NOTES

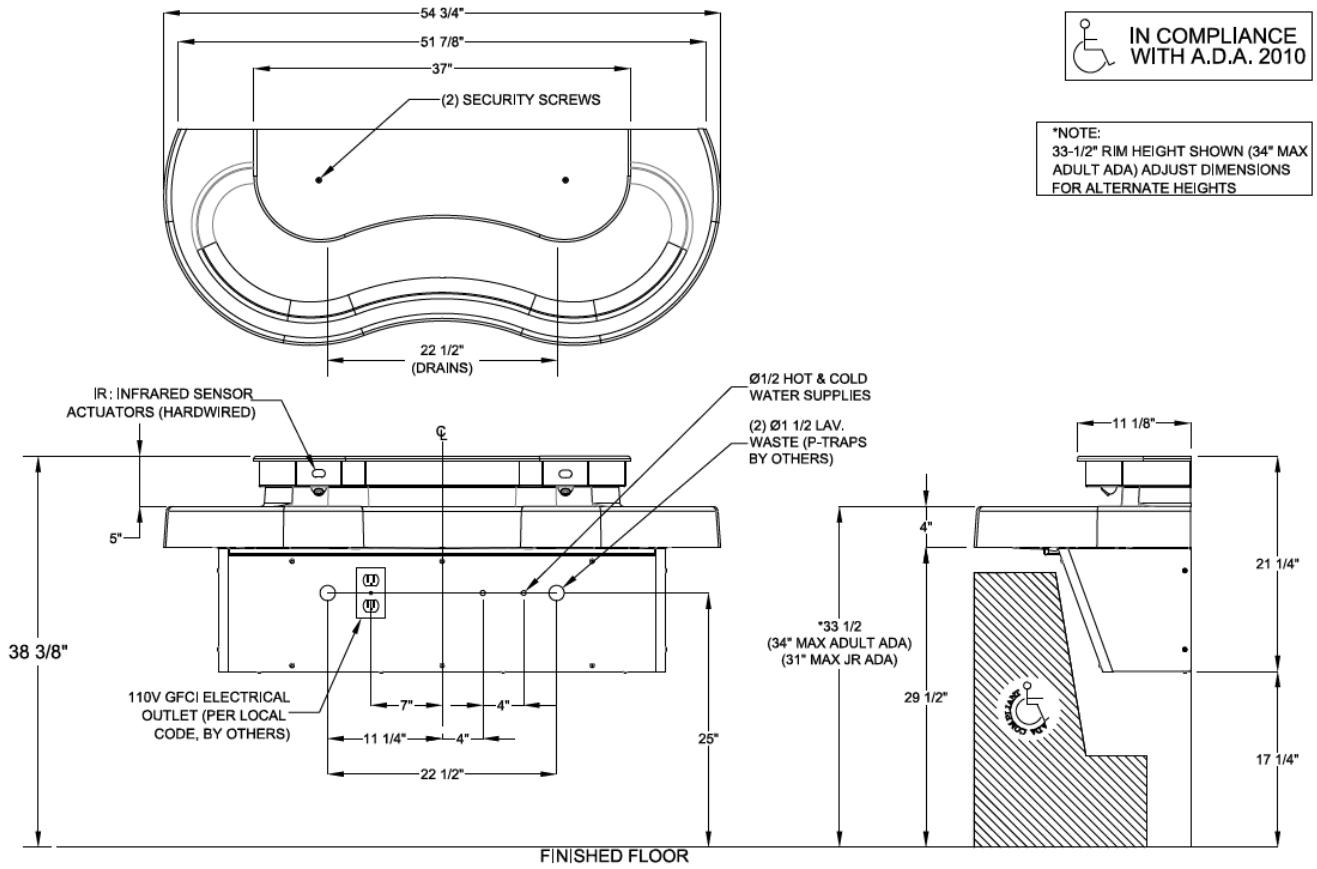
All information contained within this document subject to change without notice.

Looking for other variations of the EW-42000 product? [View the general spec sheet with all options.](#)

[Find a compatible faucet](#) for this sink.

[Find a matching soap dispenser](#) for this sink.

ROUGH-IN



Sloan 10500 Seymour Ave, Franklin Park, IL 60131
Phone: 800.982.5839 • Fax: 800.447.8329 • sloan.com