



AMERICAN SPECIALTIES, INC.

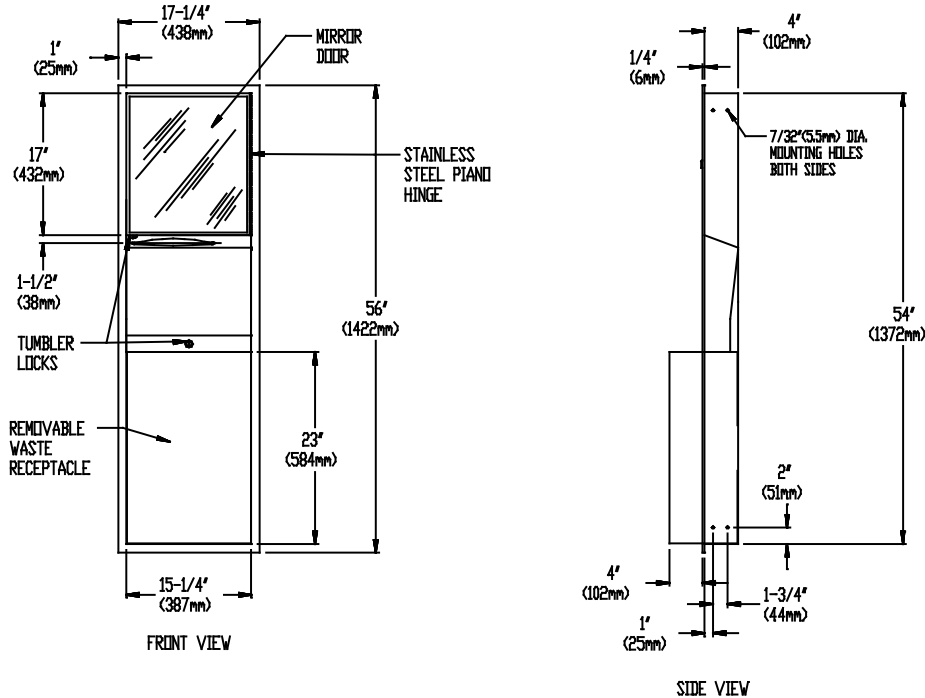
441 Saw Mill River Road, Yonkers, NY 10701 (914) 476-9000

MODEL No: 0469-A

ISSUED: 1-87

REVISED: 4-99

RECESSED PAPER TOWEL DISPENSER AND WASTE RECEPTACLE WITH MIRRORED DOOR



SPECIFICATION

Recessed Paper Towel Dispenser and Waste Receptacle with Mirror Door shall hold and dispense 800 standard multi-fold or 600 standard C-fold paper towels and shall have a waste capacity of 12 gal (46 litres). Towel dispenser, door, frame, waste container and cabinet shall be fabricated of Alloy 18-8 Stainless Steel, Type 304, N^o 22 gauge. All exposed surfaces shall be N^o 4 Satin finish and be protected during shipment with a P.V.C film easily removable after installation. Towel dispensing slot shall have a fully hemmed-in rolled edge for snag-free dispensing and user safety. Door shall be fabricated in double-pan construction with fiberboard filler and shall be attached to cabinet at side with a full length 3/16" dia. stainless steel piano hinge and be held closed with a tumbler lock keyed alike to other ASI Washroom Equipment. Waste container shall have hemmed edges for safety and shall be retained by a tumbler lock keyed alike to other ASI Washroom Equipment. Face trim shall be 1" (25.4mm) wide formed from one piece with no mitres, welding or open seams and have 1/4" (6.35mm) square return to wall. Structural assembly of all components shall be of welded construction. Cabinet shall have no exposed fastening devices or spot welded seams. Mirror shall be 1/4" thick plate glass that meets federal specification DD-M-411C and shall be warranted against silver spoilage for 15 years.

Recessed Paper Towel Dispenser and Waste Receptacle with Mirrored Door shall be Model N^o 0469-A as fabricated by American Specialties, Inc., 441 Saw Mill River Road, Yonkers, New York 10701-4913

INSTALLATION

Unit is mounted in wall recess using four (4) N^o 10 self tapping screws (supplied) through concealed mounting holes provided. For compliance with ADAAG Accessibility Guidelines, unit should be installed so that the bottom edge of reflective surface of mirror on door is mounted 40" AFF. Note that top of RWO is 3/4" (19mm) below top of unit.

Rough Wall Opening (RWO) required is.... 15-3/4"W x 54-1/2"H x 4"D min (400mm x 1384mm x 102mm)

OPERATION

Towels are self-feeding until supply is depleted. Unit may be reloaded with a partial load in-place and will continue to feed properly. Waste container is emptied manually on cycle determined by maintenance needs.

Accessory Specialties

AMERICAN DISPENSER

Desert Ray Products

WATROUS INC.